

BRUNTON

RESIDENTIAL



ALBURY ROAD, JESMOND, NE2

£2,708 Per Month

BRUNTON

RESIDENTIAL





BRUNTON

RESIDENTIAL



BRUNTON

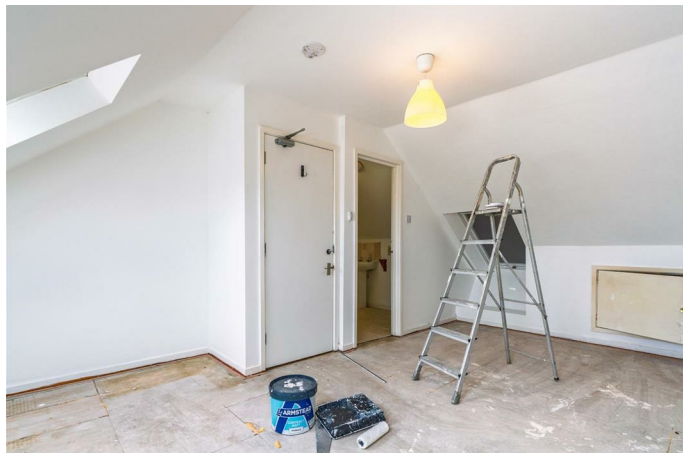
RESIDENTIAL



Available Now - Rent £2,708pcm / £125pppw - 5 Bedroom With Extra Study Room - On Street
Parking - Popular Location - Furnished - Renovations Being Carried Out - Call Today

BRUNTON

RESIDENTIAL



BRUNTON

RESIDENTIAL

BRUNTON

RESIDENTIAL

TENURE :

LOCAL AUTHORITY : Newcastle-Upon-Tyne

COUNCIL TAX BAND : D

EPC RATING : D

